

# bewegt!

Dresdner Verkehrsbetriebe AG customer magazine

1/2019

## Travelling Dresden on new tracks

Thinking today about the world of tomorrow

*Wir bewegen Dresden.*

 **DVB**  
DRESDNER VERKEHRSBETRIEBE AG

# Tendenz Abstraktion

Kandinsky  
und die Moderne  
um 1910

Kupferstich-Kabinett | Residenzschloss Dresden | 15/02.–12/05/2019 | Täglich 10–18 Uhr, Di geschlossen

Hiroshi Sugimoto  
Fotografien



**bewegt!**  
1/2019

## Dear reader,

The city of Dresden is growing; our passenger numbers are rising. Over the next few years, we will be adapting our existing local public transport services to make sure you can still enjoy travelling with our yellow fleet in future. The focus will be on renewing and expanding our route network. We are currently undertaking building works in various parts of Dresden. Every construction project is a challenge, but we should also see them as an opportunity. After all, such projects regularly consist not only in laying tracks in the road or replacing overhead lines: they also offer a chance to redesign the environment. Find out more in our main feature starting on page 6.

In addition, we invite you to welcome in the spring with us, answer the questions you have on your mind, go “Down the Line” on Route 8 from Hellerau to Südvorstadt and give away events tickets and books.

We hope you have a great read, and plenty of great trips by bus and rail.

Annett Tschacher  
Infrastructure Centre Project Manager

- 4 **What moves you?**
- 6 **Lead topic**
- 10 **DVB services**
- 12 **News**
- 16 **Allow us to introduce...**
- 18 **Down the line**
- 22 **Leos Welt**
- 24 **Active**
- 26 **Into the countryside  
by rail and bus**
- 27 **Route network**



Available online  
in German and  
English at [www.dvb.de/bewegt](http://www.dvb.de/bewegt).

# What moves you?

You ask.  
We answer.



Got a question you always wanted to ask about the DVB? This is where we answer those you have sent in over the last few weeks in letters, e-mails, by phone or on our Facebook page. Maybe one of the following issues has “moved” you, too?

## Everyone’s talking about Google and Apple Pay. Can I pay the DVB that way?

→ Yes: since December 2018 contactless payments (“kontaktlos” in German) have been possible using Google Pay and Apple Pay on your smartphone at our new ticket machines and service point cash desks. Just like when you make a contactless credit card payment, all you have to do is hold your smartphone with an NFC tag over the reader. Depending on your bank, purchases up to 25 euros can be made with your smartphone without entering a PIN (that is only needed for higher sums).



On the front of a tram, I saw a red triangle with “Tür 1” written on it – what does that mean?

→ There's a simple answer to that: the red triangle tells you which door to enter for the wheelchair ramp (here Door 1).

I have a one-month pass for Dresden at the normal fare. At the weekend I want to go on the funicular railway with my husband. Can he travel on my pass?

→ No; the hillside railways count as a special mode of transport, so you can't take another passenger on them free of charge on your one-month pass. But you and your husband still have an advantage: from 6 p.m. on weekdays and all day on weekends and public holiday, holders of a monthly pass can take one other adult with them at the concessionary hillside railway fare.



Why can't I buy a one-week pass at the machines in the tram?

→ As a rule, you should buy your ticket before you start your journey. For that reason, the machines in our trams don't sell all the available tickets, but only the most important ones. You can buy single tickets, one-day passes, night-time tickets, family tickets and one-day bicycle passes, by coin payment only. If you do not have any change on you, you can buy a ticket using our “DVB mobil” app.

## How to contact us

Dresdner Verkehrsbetriebe AG  
 DVB AG  
[service@dvbag.de](mailto:service@dvbag.de)  
 Trachenberger Straße 40  
 01129 Dresden

# Working on the future: new tracks for Dresden



In recent years, eco-aware mobility and the use of local public transport have become increasingly important. Current forecasts indicate that Dresden's population is to rise, and with it the number of public transport users.



© Steffen Natzscheck

Wasaplatz

Our aim is to make Dresden's public transport route network more attractive. If more people are to be catered for, the route network urgently needs to be renewed and expanded. We are currently carrying out three major construction projects. In all three cases, the aim is to improve the transport situation for everyone involved, to better equip tram and bus stops and to remove as many barriers as possible between services.

## Reasons for the works

- ✓ To renew tracks, roadways and pavements in need of renovation
- ✓ To expand the network
- ✓ To create barrier-free stops
- ✓ To increase traffic safety
- ✓ To improve urban development
- ✓ To lower the environmental impact, e.g. CO2 pollution, noise level

## Current construction measures

### Central stop on Tharandter Strasse

Construction work on the extensive expansion of Kesselsdorfer Strasse between Tharandter Strasse and Reisewitzer Strasse began back in June 2018. A car-free pedestrian boulevard about 350 metres long is being built there. Motorists have been permanently re-routed via Wernerstrasse and Löbtauer Strasse. The barrier-free double stop for trams and buses is being given an attractive roof on both sides, with a total length of 51



Kesselsdorfer Straße

© Steffen Natzscheck

metres. Complex roadworks are also being carried out including utilities, signals, public lighting, cycle paths and footpaths over a 300-metre stretch. Construction is due to finish and tram services to recommence by the end of September 2019.

### Oskarstrasse/Tiergartenstrasse/Wasaplatz

A barrier-free central stop is being built at the Strehlen halt, cutting the distance passengers will need to walk to change tram, bus or S-Bahn. A new tram route is also being built leading to Wasaplatz. In June 2019, trams will

no longer travel via Wasastrasse and Franz-Liszt-Strasse, but will instead go via Oskarstrasse, the Strehlen halt and Tiergartenstrasse. At the same time, Wasaplatz is being fully revamped. As well as the tram tracks and stops, all the supply lines, roadways and pavements are being rebuilt. The landscaping and little marketplace are also being redesigned.

### Meissner Strasse, Radebeul

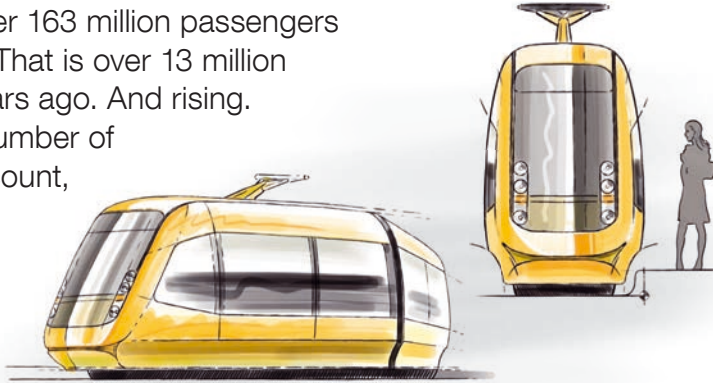
The two stops Dr.-Külz-Strasse and Zillerstrasse are being made barrier-free and given electronic departure boards. A total of 886 metres of double tracks will be replaced. The construction work is planned until the end of May 2020, but tram services to Weinböhlä are already due to resume on one set of tracks on 25 November 2019.



Meißner Straße

# Other ways we are facing the challenge of a growing city

In 2018, we took over 163 million passengers to their destination. That is over 13 million more than just 6 years ago. And rising. To take the higher number of passengers into account, we need to expand the network and our trams' capacity.



## Increasing capacity

As the first-generation low-floor trams are already more than 20 years old and, with an average service life of around 30 years, need replacing soon, one thing was clear: the trams need to be wider.



”Whenever possible, we alter the distance between the sets of tracks whenever we do construction work or required maintenance.”

Annett Tschacher  
Infrastructure Centre Project Manager

This summer, the decision will be made as to which manufacturer will build our trams. The goal is to have them entering service in 2023. The central distance between the sets of tracks needs to be three metres to enable the wider trams to pass one another in opposite directions. This has been put into practice on roughly two thirds of our network.

## Good to know

The “Technical Requirements Catalogue” sets out the specifications for new trams, for example:

- ✓ 21 unidirectional and 9 bidirectional trams
- ✓ Length: approx. 45 metres, width: max. 2.65 metres
- ✓ More space for prams, bikes, wheelchairs etc.
- ✓ At least 5 doors for quick entry and exit

## 60s buses

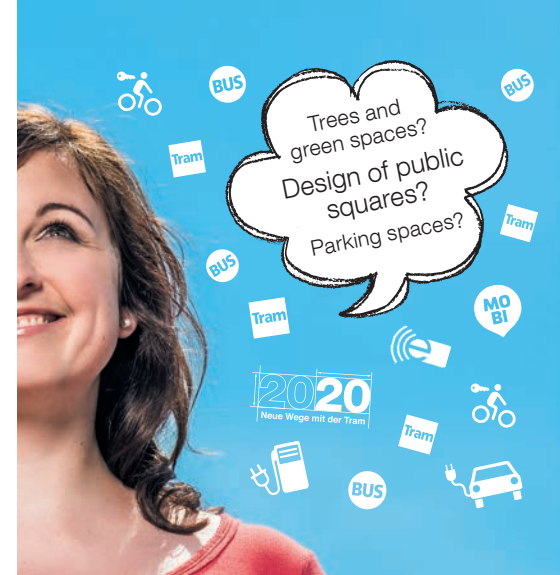
New bus services on a new route – we regularly examine how our customers travel and thus know where most of Dresden’s residents go and what routes they would like the yellow fleet to travel. We regularly amend our network accordingly. Before the year is over, we will be merging bus routes 75 and 94. In 2020, the old Route 75 will then become a bus route travelling every ten minutes from Niederwartha through the city centre to Goppeln, as Route 68.

## Even higher frequency

There are plans to add more buses on Route 64 in future. We are also investigating whether the frequency of Route 62 could be increased until the new No. 5 tram route is introduced, to meet the greater passenger volume.

## The silver lining?

Construction measures are often associated with inconvenience such as extra vehicle changes and longer journey times. But any construction project is also an opportunity to reshape life in the city. Rethinking existing traffic situations usually also makes it possible to redesign the districts in question. Living spaces can thus be given a make-over, improving their quality and making them a better place to live.



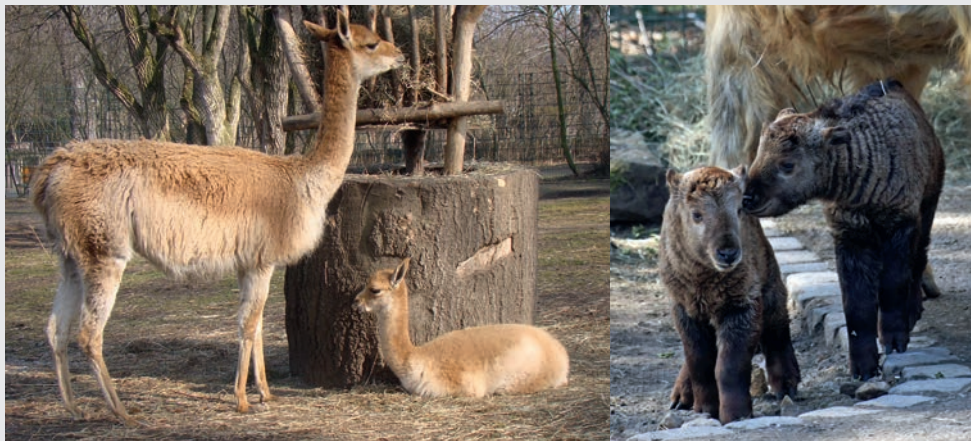
## Designing new living spaces – what can be changed?

- ✓ Moving traffic is guided and stationary traffic organised
- ✓ Requirements are met for footpaths and cycle paths
- ✓ Urban design, e.g. complying with conservation requirements
- ✓ More urban greenery, e.g. green verges, plants on traffic islands
- ✓ New district centres created as places where people can meet (e.g. with traffic-calmed areas, children's play equipment, seating)



# For subscribers only

Spring fever and cute babies: We are giving away one-day family passes for Dresden Zoo!



Did you know that Dresden Zoo is the fourth oldest zoo in Germany? It opened all the way back on 9 May 1861. It now houses about 1300 animals – 81 different bird and 63 mammal species. Embark on a little safari into another world; there is always plenty to discover. Especially in the spring, when the zoo's inhabitants start to perform courtship displays and build nests, and plenty of young can be seen making their first forays into the world.

## Exciting events

- ✓ **21/22 April:** Easter magic at the zoo
- ✓ **5 May:** SAXX life sponsor-an-animal festival
- ✓ **19 May:** Family Dixieland festival


## How to win a day at the zoo

Simply register online at [www.dvb.de/zoo](http://www.dvb.de/zoo) or by post, labelled "Zoo", and keep your fingers crossed! The registration deadline is **12 April 2019**. We will inform the winners of the one-day family passes (2 adults and up to 4 children) in person.

### Directions

Zoo Dresden

 9, 10, 11, 13  75 *Lennéplatz* (short walk)

The replacement service for trams  EV 9/13 (Zoo) is only in the direction of Prohlis

## The man who laughs

At the end of April, Dresden State Operetta will be premiering the spectacular musical "Der Mann mit dem Lachen" ("The Man Who Laughs"). This romantic historical melodrama based on Victor Hugo's monumental novel "L'homme qui rit", takes us back to 18th-century England. The accompanying music – emotional and genuine – offers an exciting cocktail of Baroque motifs in combination with modern rhythms, varying between rock, folklore and song – a must for anyone who enjoys exciting entertainment and musicals.

### Win tickets

Please register by **15 April 2019**, either online at [www.dvb/lachen](http://www.dvb/lachen) or by post, labelled "Lachen" and stating your subscription



number. We will be drawing names and giving away 7 x 2 tickets in the best category for the performances on 28/30 April, 8/12/14 May and 8/9/11 June – please specify the date you would prefer.

### Directions

Dresden State Operetta at Kraftwerk Mitte

 2, 6, 10, 12  90, 94 *Bahnhof Mitte*

## Dresden gets in the swing: win free tickets to the open-air gala

By 19 May at the latest, Dixie fever will have broken out again in Dresden! That is the date when the 49th Dresden International Dixieland Festival begins. The festival organisers traditionally hold an **open-air gala** at the Junge Garde open-air stage on the Sunday – this year on **26 May 2019** from 11 a.m. to 2 p.m.

If you are passionate about Dixie music and want to dance and swing along, please register online by **18 April 2019** at [www.dvb.de/openair](http://www.dvb.de/openair) or by post, labelled "Open Air", stating your subscription number. We will inform the winners in person.



### Directions

Junge Garde

 1, 2,  63 *Karcherallee*

 61, 63, 85 *Tiergartenstraße*



# This is what the new FAHRKARTE will look like

We have long since put an end to the paper version of the subscribers' monthly pass. For technical reasons, at the end of this year we will be replacing the first generation of smart cards. To make the new card easily recognisable, it will be given a new design. But we didn't want to choose it all on our own. As a result, you had until 31 January 2019 to choose your favourite from the following three designs on our website:

And the winner is: **Design 1!**



The new **FAHRKARTE** will be posted to you at the end of the fourth quarter of 2019. To make sure it arrives on time, we will need your current address. If you've moved, and want to tell us your new address, then you can change your details directly on our website in the "Mein Abo" section: [www.dvb.de/meinabo](http://www.dvb.de/meinabo) or simply write us a short e-mail with the updated details, your name and your subscription number to [abo@dvbag.de](mailto:abo@dvbag.de).



Thanks for all the votes!

## Bringing the past back to life

Spring in the tram museum – On **6 and 7 April 2019**, the members of the associations behind Dresden's tram museum and the preservation of the city's historical public transport vehicles look forward to your visit. Following the tradition, Dresden's marching band will be opening the museum season on Saturday at 10 a.m. Look forward to historic trams and motor vehicles, the H0 model tram layout run by the DVB AG model railway club, exciting special-event trips, rare photographs and tasty cakes and little snacks in the museum café.

### Special-event trips at a glance

#### Departures from the museum forecourt

- ✓ Round trip to Wilder Mann on a **Berolina trainset 309 + 87**
- ✓ Round trip to Goldener Reiter on an **open-coach trainset 1734 + 2015**
- ✓ Round trips on Lottchen, the **children's tram**
- ✓ Special-event trip to Bühlau with a **Tatra double heading 2000 + 222 998**

Little visitors can also test their knowledge with the museum's children's puzzle and make a little memento at the crafts stand. Incidentally, for all Tatra fans, even the trip there can start with a highlight: from 9.30 a.m. to 4.30 p.m., the No. 16 museum service (VVO fare) with a Tatra railcar will be leaving Postplatz for the tram museum every 20 minutes. This special service will, of course, also bring you back again until 5.30 p.m. All the details, exact departure times and entrance fees can be found at [www.strassenbahnmuseum-dresden.de](http://www.strassenbahnmuseum-dresden.de).

### Directions

Straßenbahnmuseum Dresden

3 **Trachenberger Platz**

16 64, 70, 73 **Betriebshof Trachenberge**

## Looking for an Easter gift?



You'll find great gift ideas for DVB fans of all ages at the customer centre and our service points. Why not pop in some time? For example, have you already come across our card game "Bim"? This fun game for all the family features pictures of different vehicles. The aim is to be the first to get rid of all your cards.

## VVO Discovery Day at the suspension railway

Back again on **26 April 2019**: On the last day of the Easter holidays, the VVO (Verkehrsverbund Oberelbe transport association) invites you to go on a family outing by rail and bus. Venture off your usual route on VVO-Entdeckertag and explore your surroundings with the one-day family pass for the Dresden fare zone. On Discovery Day, it is valid for the entire network and includes trips on both hillside railways.

### A state of suspense


Enjoy glorious views and experience the unique technology behind our historic suspension railway. Built between 1898 and 1901 as the first elevated railway of its kind, it has been preserved under heritage law since 1975. The roughly five-minute trip up to the Schöne Aussicht district takes you a distance of 274 metres, with a height difference of 84 metres. When you get to




the upper station, you have the chance from 10 a.m. to 5 p.m. to visit the machine room, ask questions and go on a walk through the exclusive residential area of Loschwitz (book on arrival) or simply enjoy the beautiful view of Dresden from the viewing platform. Meanwhile, little visitors can make a miniature suspension railway and test their newly acquired knowledge with a visual puzzle.

### Directions

Lower Schwebbahn station

 61, 63, 84/309 *Körnerplatz* (approx. 100-metre walk, heading out of town)

 6, 12  85 *Schillerplatz* (walk over the Blue Wonder to Körnerplatz)

## Family festival at the airport

On Sunday, **5 May 2019** from 10 a.m. to 6 p.m., Dresden Airport will be holding its Family Day. There will be plenty of activities for all the family in and outside the terminal, including aviation and technology exhibitions, guided tours, children's entertainment and presentations by partner companies and associations from the north of Dresden. We'll be there too, and look forward to seeing you at our DVB information stand. There, you can



test your knowledge with the subscribers' quiz and ask questions, while your children can let off steam on the DVB's bouncy castle. Admission is free. Further information: [www.dresden-airport.de](http://www.dresden-airport.de)

## What, when, where? Your DVB dates at a glance

- |                 |   |
|-----------------|---|
| <b>28–31.3.</b> | <b>Dresden Easter Trade Fair</b> – Into the countryside by rail and bus: we present our routes for your Easter walk.  |
| <b>30.3.</b>    | <b>Hillside railways and ferries start running on the summer schedule.</b> Please note that the suspension railway will be out of service from 25.3–5.4.2019 for its spring inspection. |
| <b>30.3.</b>    | <b>Theatres Open Night</b> – More buses for you to take   |
| <b>6/7.4.</b>   | <b>Spring opening days in the tram museum</b>   |
| <b>26.4.</b>    | <b>VVO Discovery Day</b> – Look forward to seeing you at the suspension railway!  |
| <b>5.5.</b>     | <b>Family Day at the airport</b> – we'll be there.  |
| <b>12.5.</b>    | <b>13th "Schillerwitz" Elbe Dixie</b> – swinging from Schillerplatz to Loschwitz.   |
| <b>14.6.</b>    | <b>Dresden Science Night</b> – More buses for you to take.  |
| <b>14–16.6.</b> | <b>Bunte Republik Neustadt</b> – nip into the Neustadt with extra services. Please note the changes to Route 13.  |
| <b>28–30.6.</b> | <b>Elbhangfest</b> – added services and rerouting for stress-free celebrations.   |
| <b>8.7.</b>     | <b>DVB holiday timetable begins</b> – we wish all schoolchildren and their parents a lovely summer.   |

**VVO-ENTDECKERTAG**  
**26. April 2019**

**FAMILIENAUSFLUG  
MIT BUS & BAHN –  
für 9 Euro durch den Verbund.**

2 Erwachsene und maximal 4 Schüler bis zum 15. Geburtstag können mit der Familientageskarte für eine Tarifzone den ganzen Verbundraum entdecken.

Mehr Infos: [www.vvo-online.de](http://www.vvo-online.de)  
InfoHotline: 0351 / 852 65 55

**VVO** 



# Staying mobile through the construction works

In Dresden you can get from A to B without a car at any time of day or night. But the city is growing. As well as maintenance to the tracks, the network also urgently needs to be expanded. As a result, construction work regularly gets in the way. Our operational planners are hard at work making sure that you can still get home or to work without much of a detour.



*The operational planners: René Müller, Claus Kümmer, Jens Pohl and Christfried Schrön.*

Our trams usually travel back and forth through Dresden city centre with hardly a break. If any part of the route network cannot operate as usual due to construction work, you may have to “please change here”. “Of course, we still bring our passengers where they want to go on the replacement service”, says Claus Kümmer, Head of Operational Planning. Along with his colleagues René Müller, Jens Pohl and Christfried Schrön, he plans, organises and coordinates replacement services for

future works. “We differentiate between short-term closures such as for events or minor repairs, and construction measures which are planned long in advance” says René Müller. “When work is planned well in advance, we are already involved in the preliminary planning. That means that we even plan replacement services years before work begins.

Then come detailed discussions with the Office for Road Construction and Civil Engineering,

the utilities providers and the construction companies, to work out the specifics of the construction schedule and the different closures and detours it involves. We then discuss topics that will affect routing, such as the access roads that will be needed, compliance with noise limits or a road’s maximum traffic capacity – and also reasonable levels of vehicle changes and travel times.

” Our aim is to keep the disruption to our passengers as low as possible.”

Claus Kümmer  
Head of Operational Planning

As a result, whenever possible, construction work is usually carried out on bank holiday weekends or during the holidays: times when fewer people are out and about, both on public transport and in their own cars. “Especially when a lot of routes or traffic junctions are affected, the restrictions would be too great in normal commuter traffic” explains Christfried Schrön. To find the “perfect moment”, the operational planners also need to bear in mind the other construction work going on in the whole city and decide whether their work can be done at the same time, or whether a construction project needs to be postponed.

Only when all the conditions have been clarified do they consider precisely how the routes will operate, and how often. For example, how close can the tram get to the construction site; where will people change vehicles, where will the tram turn? Which routes may perhaps need to be connected or also rerouted?



*René Müller and Jens Pohl discuss the detour route*

What route can the replacement service take to ensure that it visits as many stops as possible? If the construction project is to be carried out in several phases, the conditions need to be checked for each phase.

When the construction project is scheduled and replacement services fully planned, work starts on providing information. To ensure that no-one accidentally gets on the wrong tram or bus during the works, the electronic information systems are updated, flyers are sent out and posters and signs set up at tram and bus stops.

In a nutshell, planning replacement services and diversions is complex and requires coordination with a large number of partners in and outside the DVB. But Claus Kümmer’s team are happy to rise to the challenge: after all, “if everything goes as planned and our passengers get there on time despite the construction work, that’s our biggest reward”, Jens Pohl concludes.

# Down the line – on Route 8 from Hellerau to Südvorstadt

In our “Down the line” series, we present our twelve tram routes, tell you interesting facts about the line and various tram stops, and explain why it’s worth going exploring along the route.



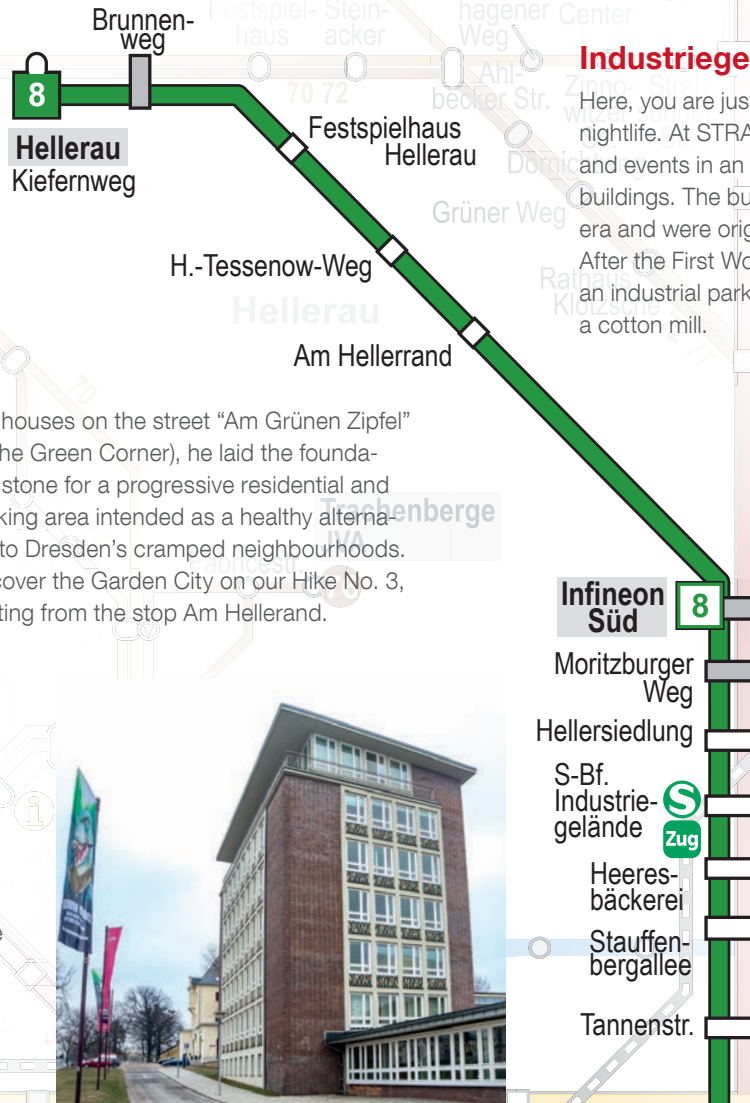
## Hellerau, Kiefernweg

Hellerau, once an independent municipality, was built in 1909 on the northern fringes of Dresden. Before it was incorporated into the city in 1950, it bore the name that was chosen by its founder Karl Schmidt and is still often used today: Hellerau Garden City. Schmidt was the entrepreneur behind the “German Craftsmanship Workshops”. In building the

## Heeresbäckerei

Near the old Army Bakery and the city archives is the 60,000 m<sup>2</sup> “Zeitenströmung” complex. After it was built in 1875, the Saxon royal military used the area as an arsenal; an arms depot. After the end of the First World War, the buildings were made accessible for civilian use and served as production facilities for turbines, flow machines and transmissions. Since the site was sold in 2004, it has offered visitors a variety of events and exhibitions.

first houses on the street “Am Grünen Zipfel” (At the Green Corner), he laid the foundation stone for a progressive residential and working area intended as a healthy alternative to Dresden’s cramped neighbourhoods. Discover the Garden City on our Hike No. 3, starting from the stop Am Hellerrand.



## Hellerau Festival Theatre

The traditional Festival Theatre of the Contemporary Arts can be admired on the outskirts of the Heller district. Built in 1911 by its founding fathers Heinrich Tessenow and Émile Jaques-Dalcroze, the building served as an educational institution for rhythm and dance. Despite producing some great performances, the Festival Theatre had to close in the 1930s, and was subsequently misappropriated as a police academy and barracks. Since its reopening in 2006, the Festival Theatre has risen to new splendour, with a year-round programme of events.

## Industriegelände S-Bahn station

Here, you are just a few minutes’ walk from Dresden’s nightlife. At STRASSE E@, you can enjoy concerts and events in an industrial ambience in listed brick buildings. The buildings date back to the Wilhelminian era and were originally used for military purposes. After the First World War, the site was converted into an industrial park and housed, among other things, a cotton mill.



## Stauffenbergallee

Heading into town on Königsbrücker Strasse and turning left, you come across the Military History Museum of the Bundeswehr. This reconstructed building designed by the architect Daniel Libeskind features more than 10,000 exhibits telling stories of centuries-old military technology, uniforms and medals. The military museum brings visitors face to face with a critical examination of the causes and consequences of war.

On Stauffenbergallee above Alauplatz, you can admire the magnificent church of St. Martin. Officially opened in 1900, this shared church united both Christian denominations under its roof. Originally intended as a church for the garrison (Garrison) and still known today as the Garrisonkirche, since 1945 it has mainly been used by the Catholic community of St. Francis Xaver.



### On historical tracks

On 21.1.1905, this route was introduced as a link to Route 6 between Bergkeller and the Trachenberge/Wilder Mann tram depot. In 1906, when the route numbers were brought in, it became Route 8.

Electrically powered, it was shut down again as early as 1909 when the network was reorganised.

In 1937, Route 8 replaced the Route 7 service to Rähnitz, after which Route 7, which had previously



served two terminals in the north of Dresden, only went to Weixdorf. Since May 2000, Route 8 has connected Hellerau with Südvorstadt via the Neustadt and the Altstadt.



### Central station

Route 3 and Route 8 pass by the main entrance to Dresden Central Station. If you look up, you can see the sandstone sculpture of Saxonian created by Friedrich Rentsch in 1895. Saxony's patron represents the region as a personified allegory and has a particularly victorious air about her here. She is flanked by two young men who symbolise science and technology.



### Südvorstadt

Until the 19th century, the area now known as Südvorstadt was sparsely populated. The long-vanished Sorbian settlements of Boskau and Auswik were located here until the 15th century; afterwards, the site was mainly used for agriculture. At the time, Zellescher Weg was of greater importance as a link between the monastery garden in Leubnitz and Altzella Abbey, near Nossen. The Battle of Dresden against Napoleon and the Second World War severely damaged the Südvorstadt. Today, the district is home to the TU Dresden campus, with more than 30,000 students a year.

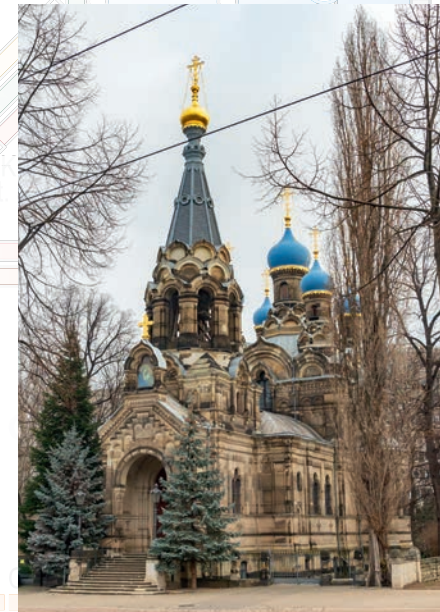


### Bischofsweg

At the spot where Bischofsweg crosses Königsbrücker Strasse is the Schauburg, one of the oldest cinemas in Dresden. In the Golden Twenties, when films enjoyed great popularity, architect Martin Pietzsch created what was the first free-standing cinema. It survived the war unscathed, and in 1953 was the birthplace of the SG Dynamo Dresden sports association. After extensive renovation work, the Schauburg opened its doors again last year.

### Reichenbachstrasse

To the south of Reichenbachstrasse is the Russian Orthodox Church of St. Simeon of the Wonderful Mountain. With its five blue onion domes, gilded crosses and 40-metre bell tower, it stands out strikingly from other local churches. The church was opened after just two years of construction in 1874, to give the growing Russian community in Dresden its own place of worship. Like all Orthodox churches, its main axis faces east.

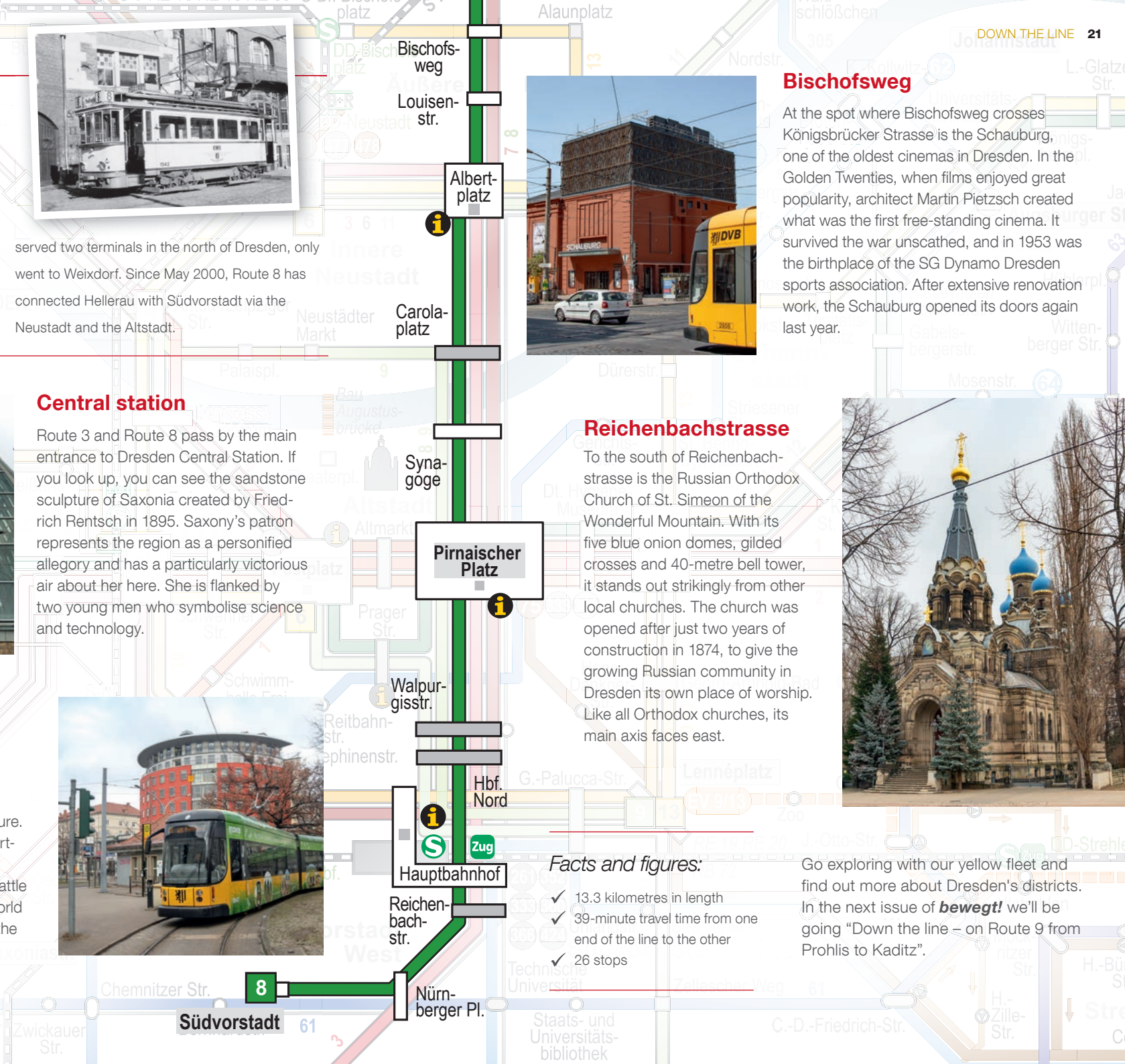


### Pirnaischer Platz

### Facts and figures:

- ✓ 13.3 kilometres in length
- ✓ 39-minute travel time from one end of the line to the other
- ✓ 26 stops

Go exploring with our yellow fleet and find out more about Dresden's districts. In the next issue of **bewegt!** we'll be going "Down the line – on Route 9 from Prohlis to Kaditz".



8  
Südvorstadt 61

Nürnberg-Pl.

# Leos Welt *The missing skateboard!*



Look, there's Theo. He looks sad; I wonder what's happened.



Hey, Theo, what's up? Is something the matter?

I left my skateboard on the tram.



The championship's on Saturday. Without my brilliant board, I don't stand a chance.



Chin up, Theo, I'll help you!

Let's begin by asking for help at the nearest DVB service point.



Theo's left his skateboard on the tram. Can you help us?



Hmm, nothing's been handed in, I'm afraid.

You'd best stop by at the lost property office. It's just round the corner.



Soon after.

You're looking for an orange skateboard with yellow wheels?



Let's see what's washed up here lately ...



We've got a set of false teeth, Pokémon cards, a football scarf and ...

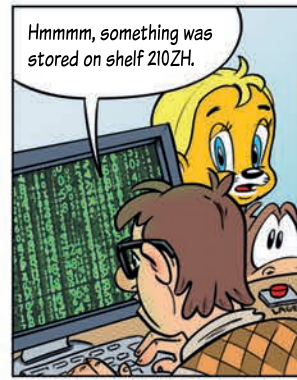


...tadaa, a skateboard!!!

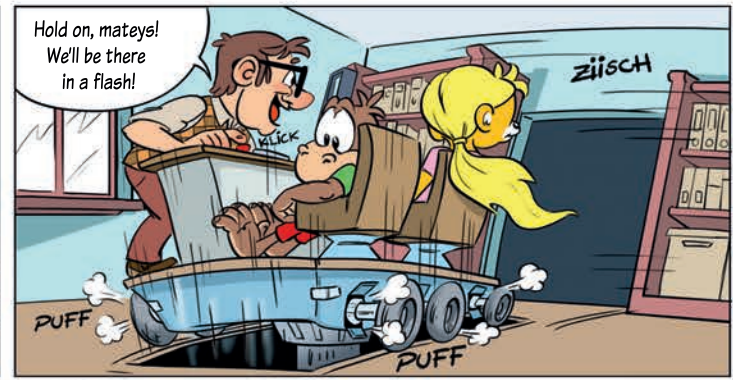
Actually, that's a snowboard.



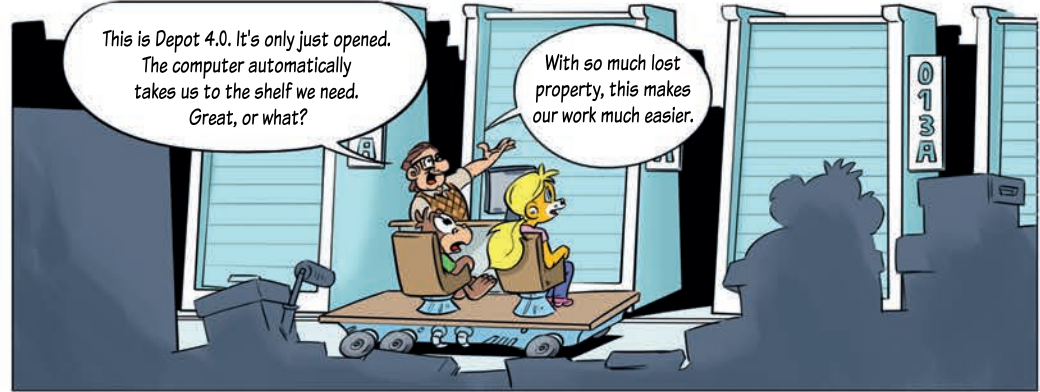
Heh heh, how embarrassing. I'll do a quick computer check. Maybe your skateboard was taken to the depot.



Hmmmm, something was stored on shelf 210ZH.



Hold on, mateys! We'll be there in a flash!



This is Depot 4.0. It's only just opened. The computer automatically takes us to the shelf we need. Great, or what?

With so much lost property, this makes our work much easier.



Except for the sorting: we still have to do that ourselves. This is Shelf 210ZH. Your skateboard should be here somewhere.

Oh, the shelf's still in a bit of a mess. Children, can you help us find Theo's skateboard?

# Crossword

Solve the puzzle and win tickets to Dynamo Dresden's game against FC Cologne!

Every point counts in the second half of the season – cheer Dynamo on live in the stadium on **21 April 2019!** Simply fill in the German words and send the solution to [www.dvb.de/kreuzwortraetsel](http://www.dvb.de/kreuzwortraetsel) or by post. The closing date for entries is **8 April 2019.** With a little luck you'll be there; we will be informing the winners in person.

1. End stop on Route 2
2. What bridge does Route 64 cross?
3. Where do Routes 4, 9, 13, 64 and 79 meet?
4. DVB depot
5. Stop by the twin fountains "Stormy Waves" and "Still Waters"
6. Short name for Anrufinientaxi, the dial-a-taxi service
7. Name of our ferry in Laubegast
8. Payments can be made this way at our machines with Google Pay and Apple Pay
9. DVB ticket for 5 people
10. Found on Neustadt Market
11. Takes place on 26 April: VVO-...
12. Hike 15 goes from the waterworks to ...

**Answer**

1	2	3	4	5	6	7	8	9	10	11	12	13	14	15	16
---	---	---	---	---	---	---	---	---	----	----	----	----	----	----	----

Please note the privacy information in the publishing details on page 26. The answer to last issue's puzzle was "Weihnachtszeit" – Christmas time.



Photo: Steffen Kuttner

## #wirbewegendresden

### Snapshot of the season

Many thanks to steffenvdd for the beautiful snapshot.

#### More great photos

Want to see more of us? Our yellow fleet, the depots, our view of Dresden? Follow us on Instagram @dvbag.



## Good reads on the move

### Ursula Poznanski Vanitas – Schwarz wie Erde

At Vienna Central Cemetery, the florist Carolin is such a familiar sight that she is almost



invisible. As are the messages she exchanges with her clients, encoded in the language of flowers – as her greatest fear is of being found out. Just a year ago, Carolin went by a different name, spying for the police on the heels of one of the

most brutal organised crime gangs around. But then she gets a floral message calling her in to Munich for a new case.

**Length: 384 pages, price: €14.99, language: German, published by Knaur Verlag**

#### Draw

**Our book recommendations for on the move – win one of 10 copies!**

Take part in the draw at [www.dvb.de/thalia](http://www.dvb.de/thalia) by **25 April 2019.** We will inform the winners in person.



Thanks to

# Pack your rucksack, tie up your hiking boots ...



## From the waterworks to Putzatinhaus

Our recommended Hike 15 takes you on an almost ten-kilometre trip from the Tolkewitz waterworks along the banks of the Elbe at Laubegast to Kleinzschachwitz and the Putzatinhaus. This route combines the natural setting of the river, the beauty of the Elbe meadows and the history of the buildings along the way. Unlike most of our hikes, this route is barrier-free if you use the Elbe cycle path, which is within sight of the suggested

## Impressum

**bewegt!** Issue 01/2019

**Press date:** February 2019

**Published by:** Dresdner Verkehrsbetriebe AG, Trachenberger Strasse 40, 01129 Dresden Tel. +49 (0) 351 857-1011, [bewegt@dvbag.de](mailto:bewegt@dvbag.de), [www.dvb.de](http://www.dvb.de), [www.facebook.com/dvbag](https://www.facebook.com/dvbag)

**Edited by:** Jacqueline Kleinschmidt

**Liability:** Katrin Hoppe

**Text and photographs:** DVB AG, AdobeStock, Oberländer Kommunikation, André Forner, Steffen Natzschka,

... and enjoy the fresh air. Nature is awakening from its winter sleep; can you hear its call?

Discover the first signs of spring with our "Into the countryside by rail and bus" hikes. But you can leave your knee breeches on the shelf: all the starting and end points on our hikes can easily be reached by rail and bus.

### *Fare tip: Family day ticket*

- ✓ for 2 adults and up to 4 children aged up to 15
- ✓ costs just € 9 for the Dresden fare zone
- ✓ valid until 4 a.m. the next day
- ✓ for all regular tram, bus and ferry services in the Dresden urban region

hiking route. Altogether, you will need about three hours for your outing.

You can find our hikes at our service points and online at [www.dvb.de/wandertipps](http://www.dvb.de/wandertipps).

Steffen Kuttner, Staatsoperette Dresden, Zoo Dresden  
**Note on data protection for competitions and draws:**

To process the draws and analyse the statistics, the data you provide will be stored by DVB AG for 365 days, then automatically deleted. Further information: [www.dvb.de/datenschutz](http://www.dvb.de/datenschutz)

**Production run:** 50,000 copies

**Printing:** Druckerei Vettlers GmbH & Co. KG

**bewegt!** 02/2019 comes out in July 2019. Subject to alteration.



We have now published a total of 15 hikes to entice you to rediscover "your Dresden". These help you find your way by showing how to get there and back on our yellow fleet and describing the hiking route in detail, with a precise map. Examples include:

## North

### Hike 12: Through Priessnitzgrund to Dresden's Heller landscape

Unlike the heathland of Dresden Heide, the Heller is only sparsely wooded. The once unpopular site is a pleasant surprise, and is protected as a natural habitat for animals and plants.

🕒 3 hours 📍 Alauplatz

13

## West

### Hike 5: From Pennrich to Briesnitz – through Zschonergrund

This nature conservation area with its valley of steep, rocky slopes, species-rich meadows and old mills and orchards is a popular recreation area in the west of the city.

🕒 3 hours 📍 Pennrich, Route

7 tram loop

## East

### Hike 14: From Loschwitz village square to the Elbe palaces

Follow us through Loschwitz – Dresden's most important and exclusive residential area – and the heathland of Dresden Heide to the Elbe palaces, enjoying a hike that combines historical city architecture and urban greenery.

🕒 3 hours 📍 Körnerplatz

61, 63, 84/309



## South

### Hike 10: From Mockritz to Prohlis – through Gebergrund

Just a few kilometres away from the vibrant life of the city, you will find soothing peace and quiet in undisturbed countryside. Hike along Nöthnitzbach

and Geberbach, across the hills in the south of Dresden past the mansions of Nöthnitz and Nickern.

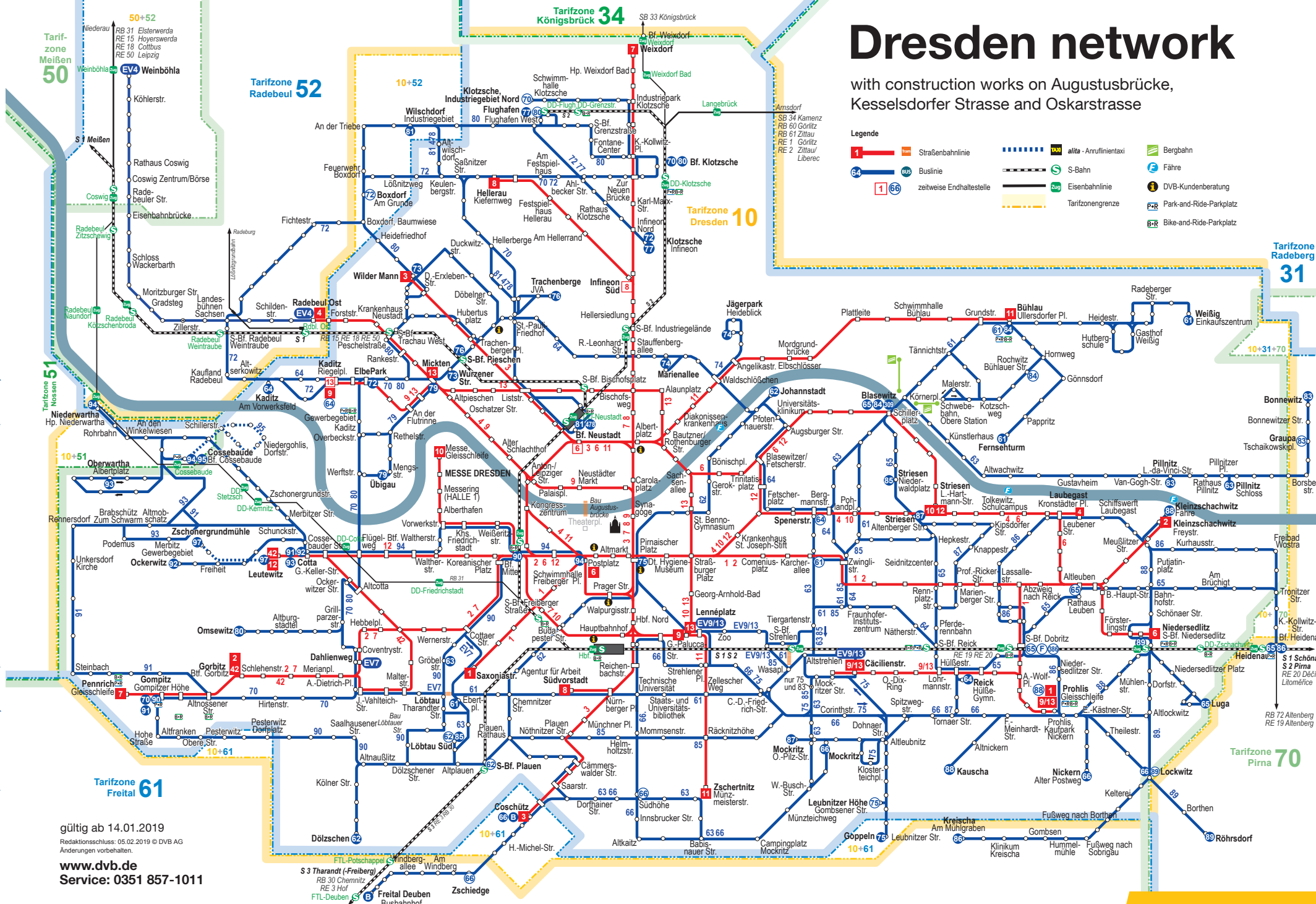
🕒 5 hours 📍 Mockritz campsite

63, 66

# Dresden network

with construction works on Augustusbrücke, Kesselsdorfer Strasse and Oskarstrasse

- Legende
- Straßenbahnlinie
  - Buslinie
  - zeitweise Endhaltestelle
  - S-Bahn
  - Eisenbahnlinie
  - Tarifzongrenze
  - Bergbahn
  - Fähre
  - DVB-Kundenberatung
  - Park-and-Ride-Parkplatz
  - Bike-and-Ride-Parkplatz



Pull it out, put it in your pocket and take it on a trip.

gültig ab 14.01.2019  
 Redaktionsschluss: 05.02.2019 © DVB AG  
 Änderungen vorbehalten.  
[www.dvb.de](http://www.dvb.de)  
 Service: 0351 857-1011

Wir bewegen Dresden.





**If you want  
breakfast,**

**we'll be happy to  
take you to the  
baker's.**



**It's okay to throw away rubbish.  
But please put it where it belongs!**

Treating one another with respect. #vollookay

*Wir bewegen Dresden.*